

Qty. Description

1 UPS 40-185/2 F 250



Note! Product picture may differ from actual product

Product No.: [96430296](#)

The pump is of the canned rotor type, i.e. pump and motor form an integral unit without shaft seal and with only two gaskets for sealing. The bearings are lubricated by the pumped liquid.

In order to avoid problems in connection with disposal, great importance has been attached to using as few different materials as possible.

The pump is characterized by:

- * 3 speed motor.
- * Ceramic radial bearings.
- * Carbon axial bearing.
- * Stainless steel rotor can, bearing plate and rotor cladding.
- * Aluminium alloy stator housing.
- * Cast iron pump housing.
- * Stator with built-in thermal switch.

The motor is a 3-phase motor.

The pump is supplied with a standard module in the terminal box.

The standard module is to be connected to the mains supply via external contactor.

Controls:

Relay: N

Liquid:

Pumped liquid: Water

Liquid temperature range: -10 .. 120 °C

Selected liquid temperature: 60 °C

Density: 983.2 kg/m³

Technical:

Rated flow: 12.2 m³/h

Rated head: 10.88 m

Approvals: AAA, EAC

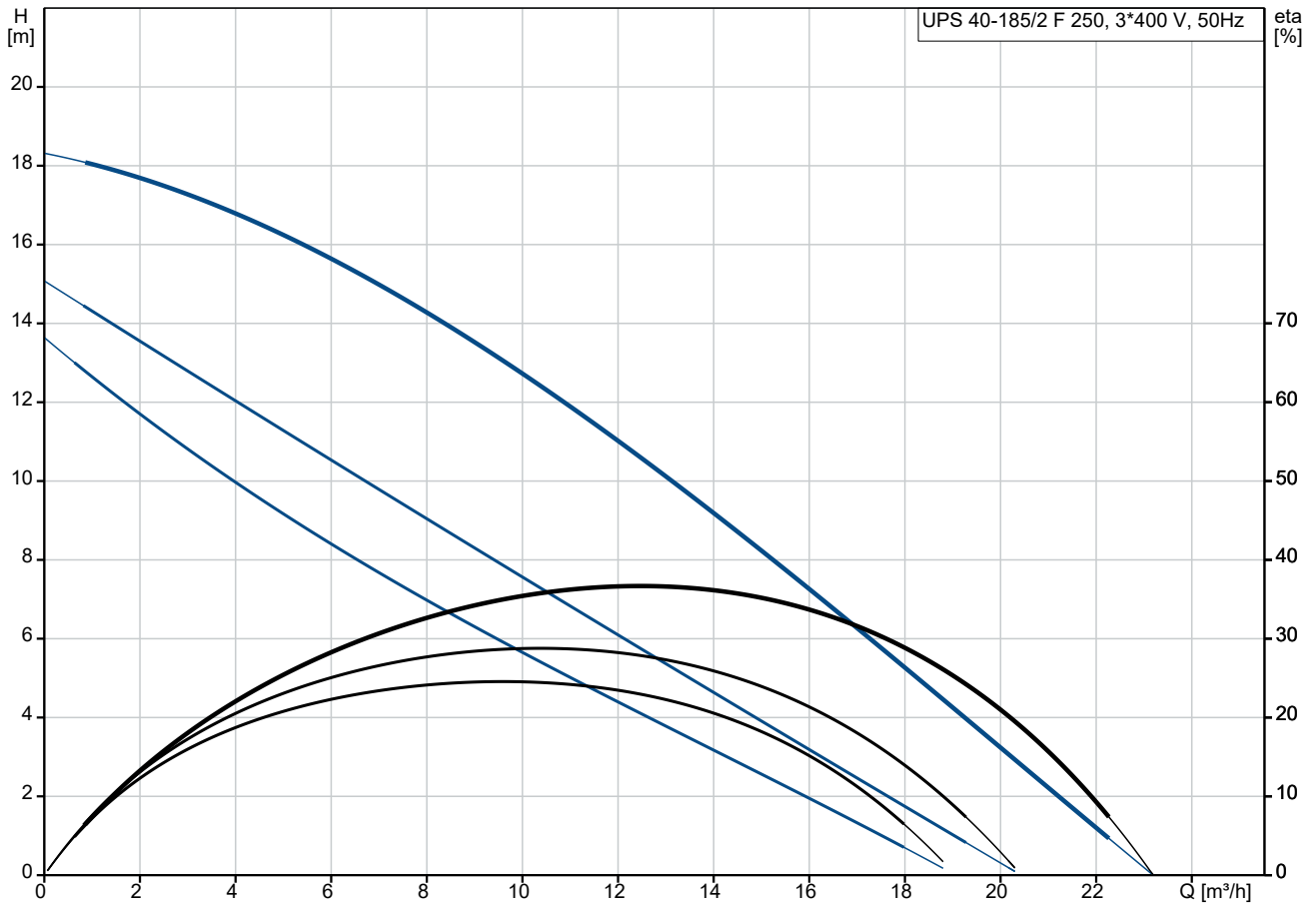
Materials:

Pump housing: Cast iron
EN 1561 EN-GJL-250
35 B - 40 B

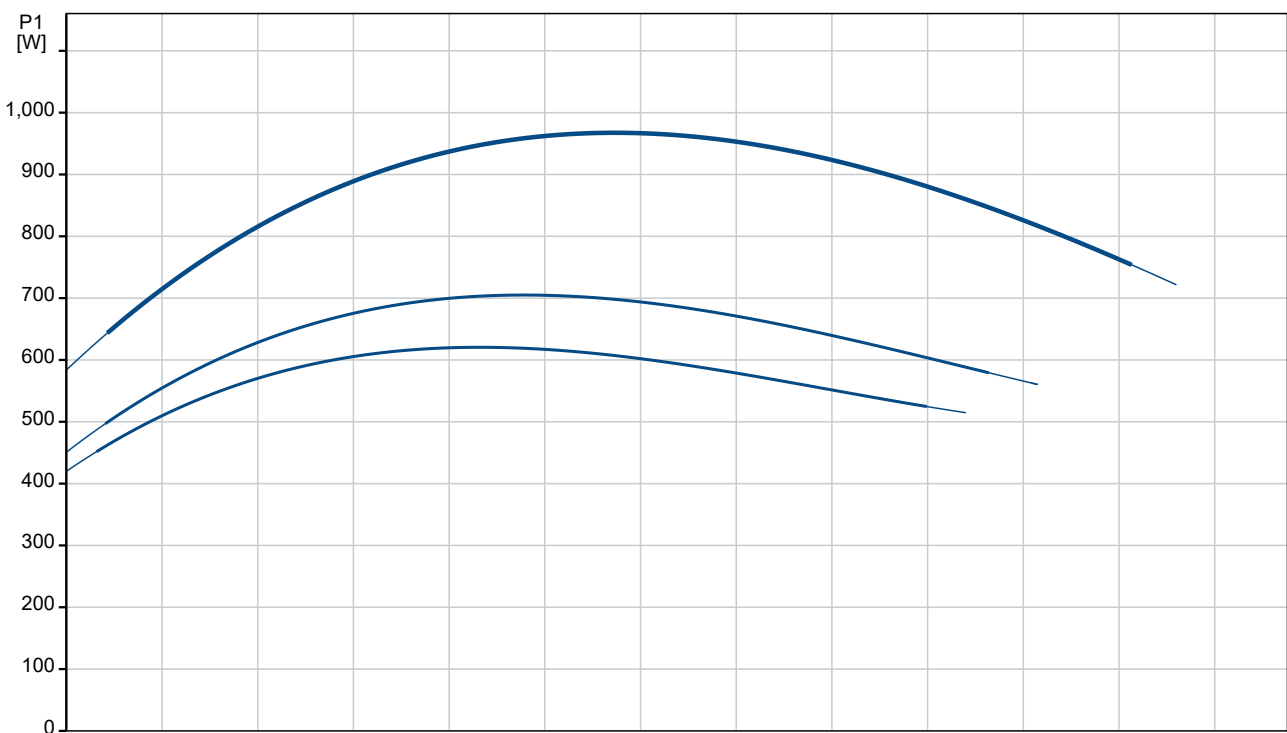
Impeller: Stainless steel
EN 1.4301

| Qty. | Description |
|------|---|
| 1 | <p>304</p> <p>Installation:</p> <p>Range of ambient temperature: 0 .. 40 °C</p> <p>Maximum operating pressure: 10 bar</p> <p>Type of connection: DIN</p> <p>Size of connection: DN 40</p> <p>Pressure rating for connection: PN 6/10</p> <p>Port-to-port length: 250 mm</p> <p>Electrical data:</p> <p>Power input in speed 1: 620 W</p> <p>Power input in speed 2: 705 W</p> <p>Max. power input: 975 W</p> <p>Mains frequency: 50 Hz</p> <p>Rated voltage: 3 x 400-415 V</p> <p>Current in speed 1: 1.04 A</p> <p>Current in speed 2: 1.18 A</p> <p>Current in speed 3: 1.8 A</p> <p>Cos phi in speed 1: 0.86</p> <p>Cos phi in speed 2: 0.86</p> <p>Cos phi: 0.78</p> <p>Number of poles: 2</p> <p>Enclosure class (IEC 34-5): X4D</p> <p>Insulation class (IEC 85): H</p> <p>Built-in motor protection: CONTACT</p> <p>Others:</p> <p>Terminal box position: 1.30H</p> <p>Net weight: 19.7 kg</p> <p>Gross weight: 21.4 kg</p> <p>Shipping volume: 0.034 m³</p> <p>Danish VVS No.: 380718041</p> |

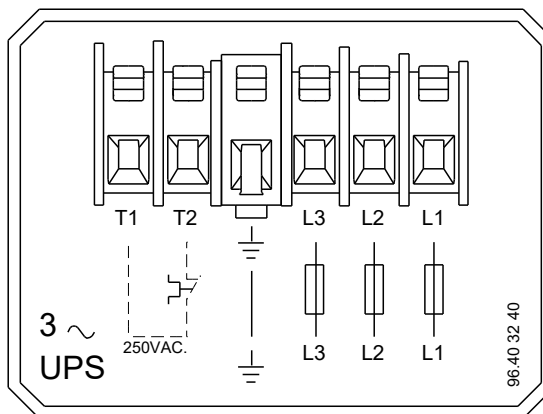
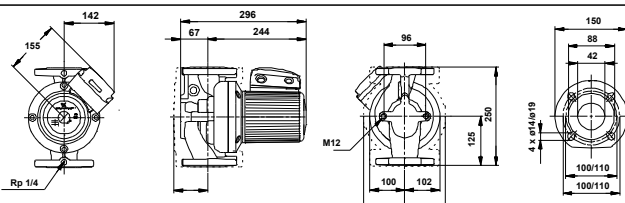
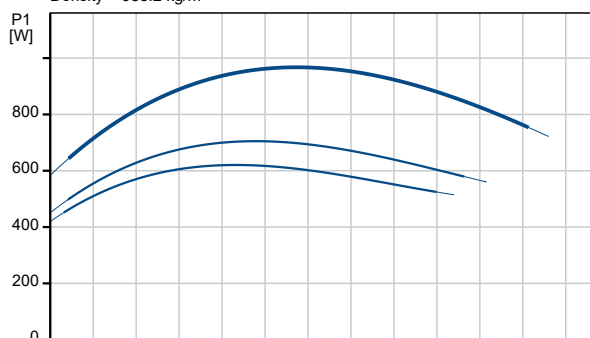
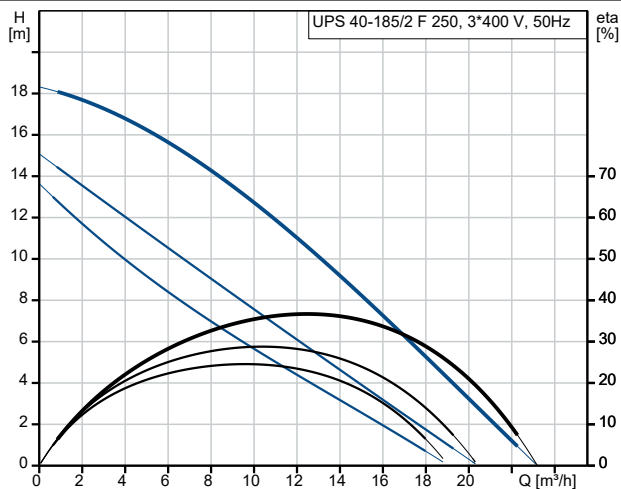
96430296 UPS 40-185/2 F 250 50 Hz



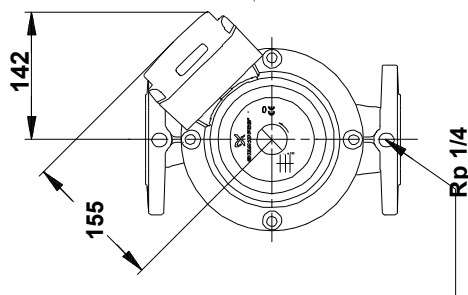
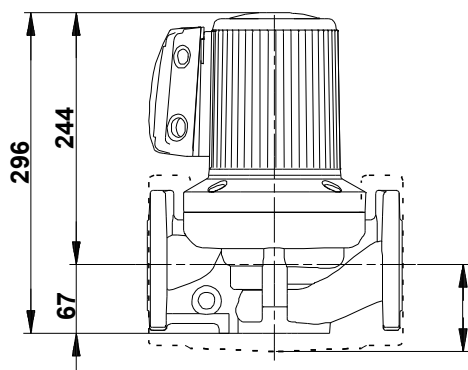
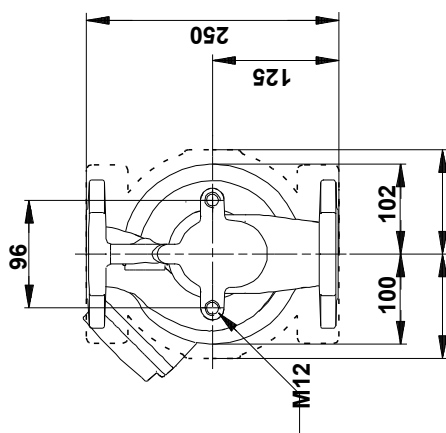
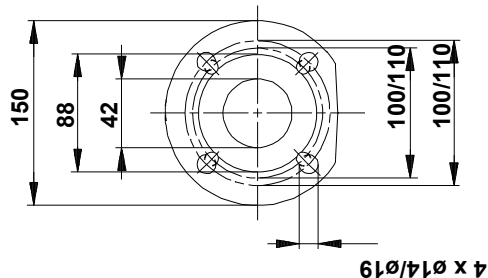
Pumped liquid = Water
 Liquid temperature during operation = 60 °C
 Density = 983.2 kg/m³



| Description | Value |
|---------------------------------|--------------------|
| General information: | |
| Product name: | UPS 40-185/2 F 250 |
| Product No: | 96430296 |
| EAN number: | 5700392948090 |
| Technical: | |
| Speed no: | 3 |
| Rated flow: | 12.2 m³/h |
| Rated head: | 10.88 m |
| Maximum head: | 185 dm |
| Approvals: | AAA,EAC |
| Model: | C |
| Materials: | |
| Pump housing: | Cast iron |
| Pump housing: | EN 1561 EN-GJL-250 |
| Pump housing: | 35 B - 40 B |
| Impeller: | Stainless steel |
| Impeller: | EN 1.4301 |
| Impeller: | 304 |
| Installation: | |
| Range of ambient temperature: | 0 .. 40 °C |
| Maximum operating pressure: | 10 bar |
| Type of connection: | DIN |
| Size of connection: | DN 40 |
| Pressure rating for connection: | PN 6/10 |
| Port-to-port length: | 250 mm |
| Liquid: | |
| Pumped liquid: | Water |
| Liquid temperature range: | -10 .. 120 °C |
| Selected liquid temperature: | 60 °C |
| Density: | 983.2 kg/m³ |
| Electrical data: | |
| Power input in speed 1: | 620 W |
| Power input in speed 2: | 705 W |
| Max. power input: | 975 W |
| Mains frequency: | 50 Hz |
| Rated voltage: | 3 x 400-415 V |
| Current in speed 1: | 1.04 A |
| Current in speed 2: | 1.18 A |
| Current in speed 3: | 1.8 A |
| Cos phi in speed 1: | 0.86 |
| Cos phi in speed 2: | 0.86 |
| Cos phi: | 0.78 |
| Number of poles: | 2 |
| Enclosure class (IEC 34-5): | X4D |
| Insulation class (IEC 85): | H |
| Built-in motor protection: | CONTACT |
| Thermal protec: | EXT. |
| Controls: | |
| Relay: | N |
| Others: | |
| Terminal box position: | 1.30H |
| Net weight: | 19.7 kg |
| Gross weight: | 21.4 kg |
| Shipping volume: | 0.034 m³ |
| Danish VVS No.: | 380718041 |



96430296 UPS 40-185/2 F 250 50 Hz



Note! All units are in [mm] unless others are stated.
Disclaimer: This simplified dimensional drawing does not show all details.