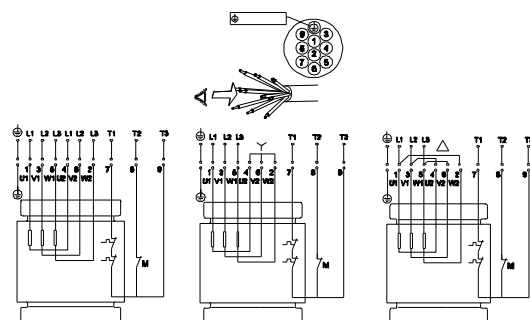
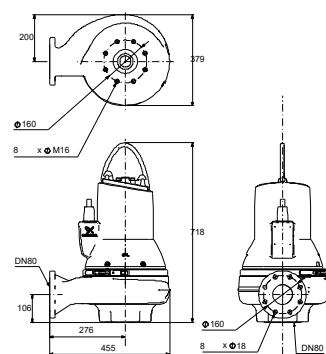
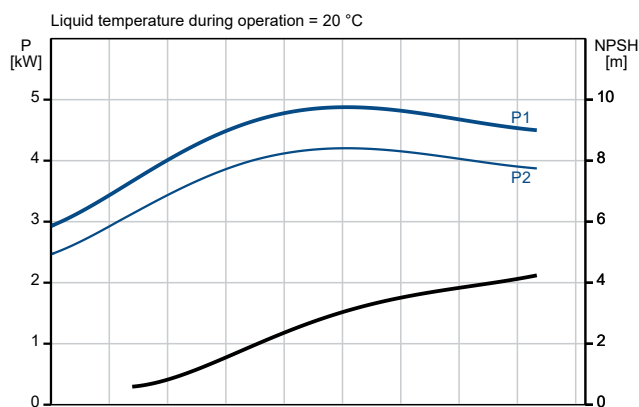
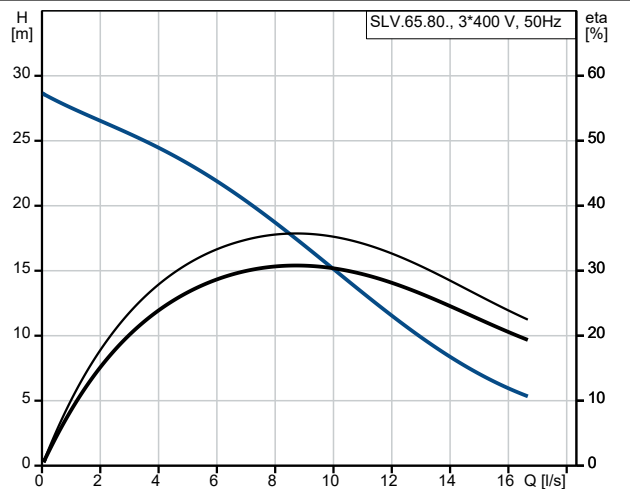


Description	Value
General information:	
Product name:	SLV.65.80.40.2.51D.C
Product No:	98624699
EAN number:	5711498435445
Technical:	
Rated flow:	8.72 l/s
Maximum flow:	16.7 l/s
Rated head:	17.44 m
Maximum head:	29.9 m
Type of impeller:	SUPER VORTEX
Max. Particle:	65 mm
Primary shaft seal:	SIC/SIC
Approvals:	CE EN12050-1
Curve tolerance:	ISO9906:2012 3B2
Cooling jacket (Yes/No):	N
Materials:	
Pump housing:	Cast iron
Pump housing:	EN 5.1301 EN-GJL-250
Impeller:	Cast iron
Impeller:	EN 5.1301 EN-GJL-250
Motor:	EN-GJL-250
Installation:	
Range of ambient temperature:	0 .. 40 °C
Maximum operating pressure:	6 bar
Type of inlet connection:	DIN
Type of outlet connection:	DIN
Size of inlet connection:	DN 80
Size of outlet connection:	DN 80
Pressure rating for connection:	PN 10
Maximum installation depth:	7 m
Inst dry/wet:	SUBMERGED
Installation:	Vertical
Auto coupling:	96090993
Frame range:	C22
Liquid:	
Liquid temperature range:	0 .. 40 °C
Selected liquid temperature:	20 °C
Density:	998.2 kg/m ³
Electrical data:	
Power input P1:	4.9 kW
Rated power - P2:	4 kW
Mains frequency:	50 Hz
Rated voltage:	3 x 380-415 V
Voltage tolerance:	+10/-10 %
Max starts per hour:	20
Rated current:	8.2 A
Starting current:	86 A
Cos phi - power factor:	0.88
Cos phi - p.f. at 3/4 load:	0.83
Cos phi - p.f. at 1/2 load:	0.77
Rated speed:	2930 rpm
Motor efficiency at full load:	86.2 %
Motor efficiency at 3/4 load:	85.3 %
Motor efficiency at 1/2 load:	83.2 %
Number of poles:	2
Method of start:	SD
Enclosure class (IEC 34-5):	IP68
Insulation class (IEC 85):	H





Company name:

Created by:

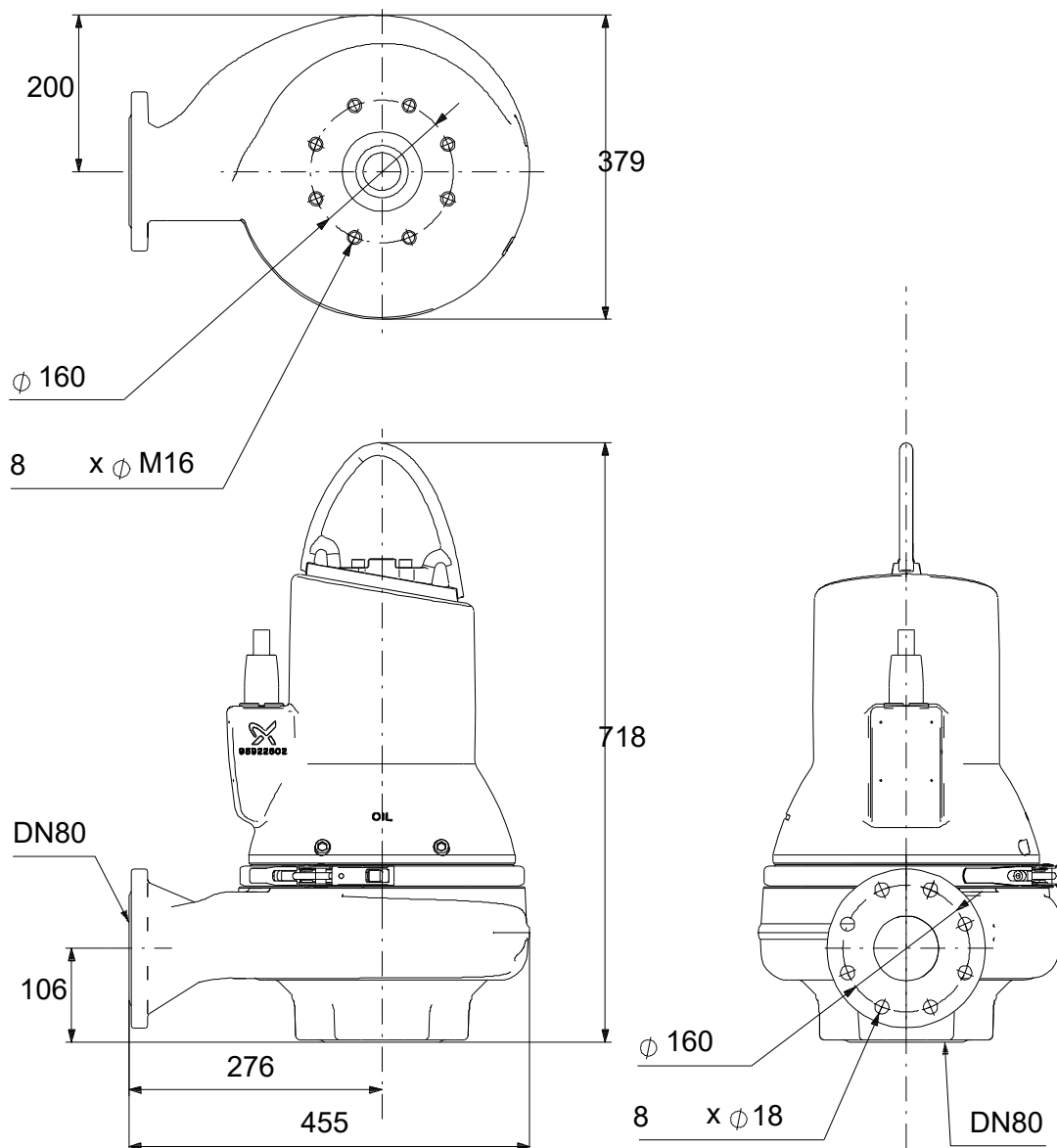
Phone:

Date:

18/07/2024

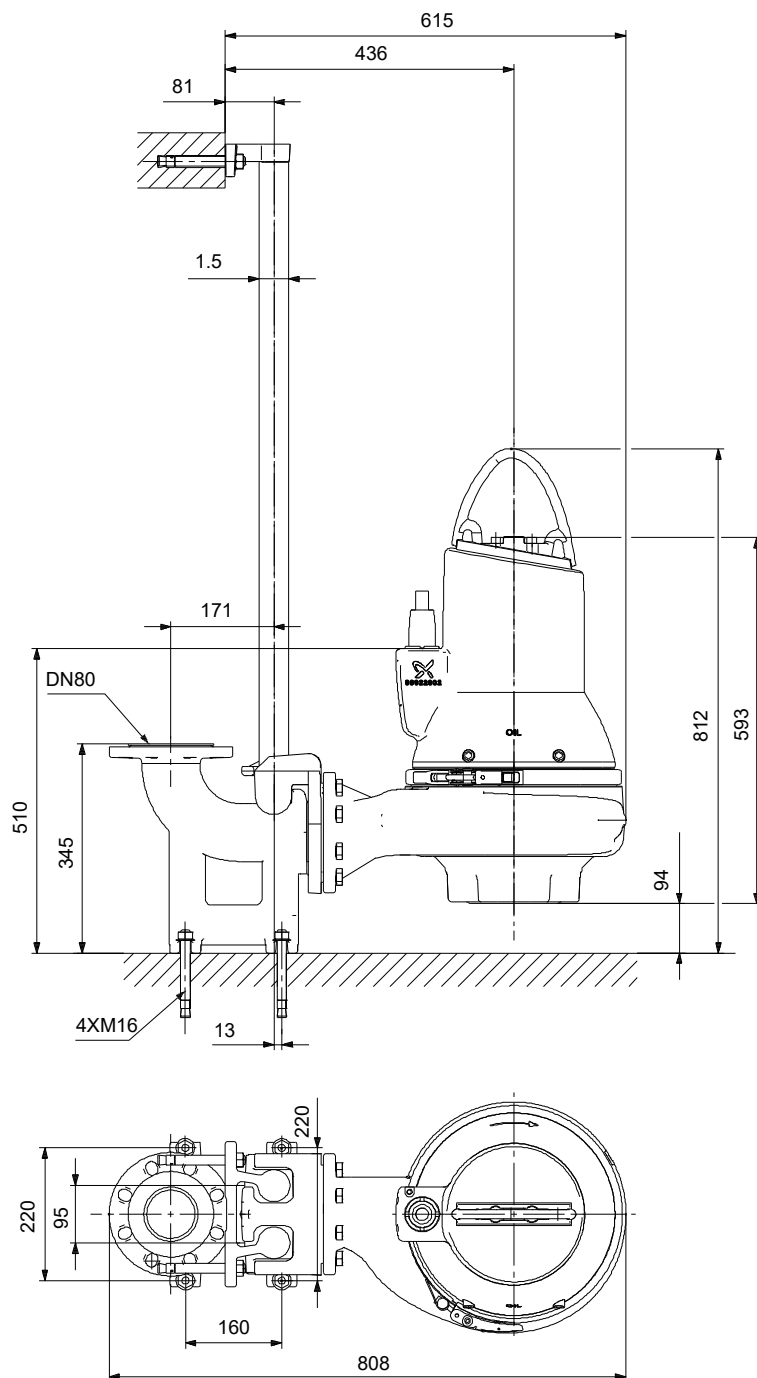
Description	Value
Explosion proof:	no
Built-in motor protection:	THERMAL SWITCH
Power cable type:	LYNIFLEX
Length of power cable:	10 m
Power plug:	No plug
Controls:	
Control box:	N
Moisture sensor:	Y
Water-in-oil sensor:	N
Others:	
Net weight:	117 kg
Gross weight:	137 kg
Danish VVS No.:	391299124
Finnish LVI No.:	4836135

98624699 SLV.65.80.40.2.51D.C 50 Hz



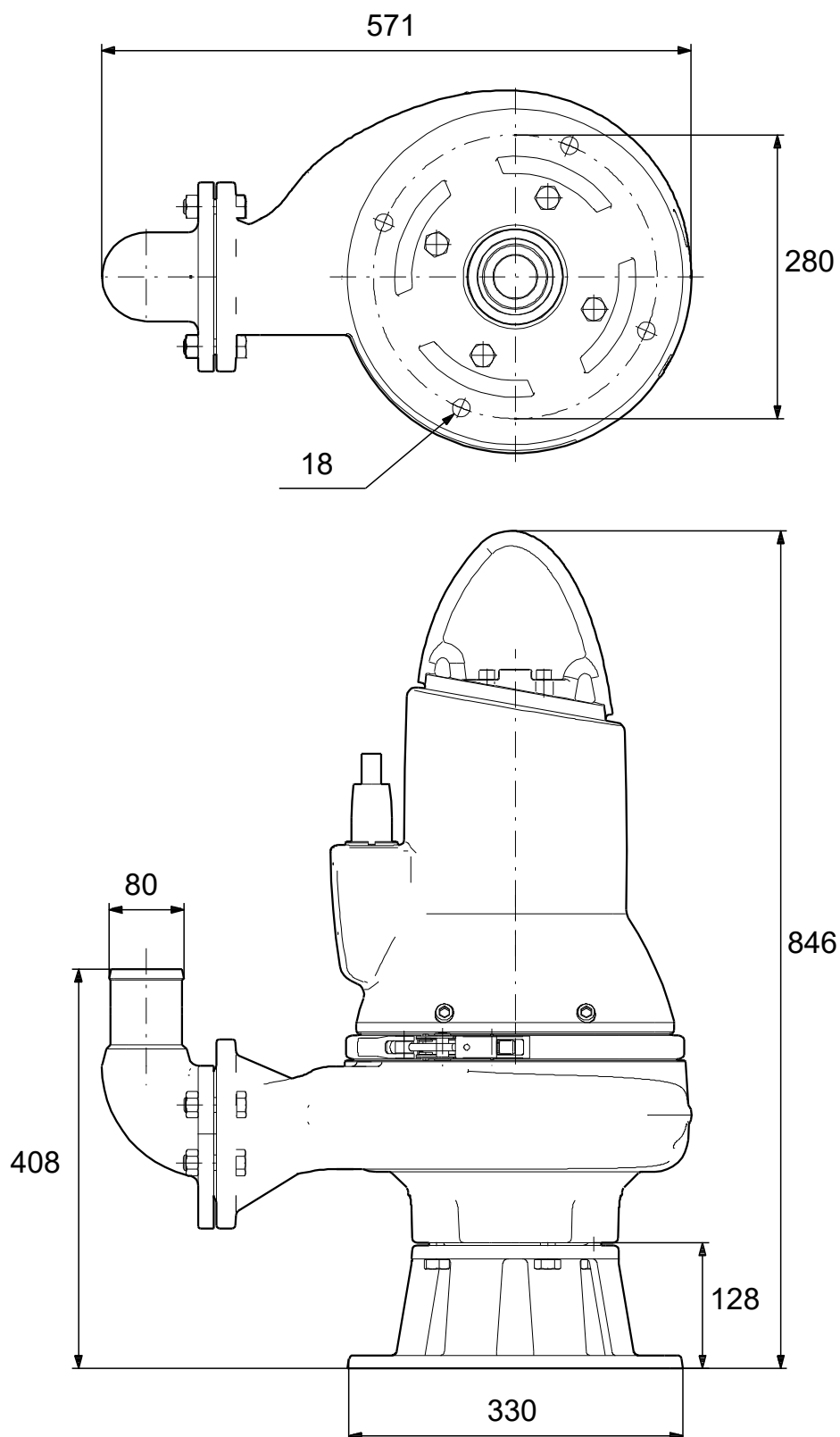
Note! All units are in [mm] unless others are stated.
Disclaimer: This simplified dimensional drawing does not show all details.

98624699 SLV.65.80.40.2.51D.C 50 Hz



Note! All units are in [mm] unless others are stated.
Disclaimer: This simplified dimensional drawing does not show all details.

98624699 SLV.65.80.40.2.51D.C 50 Hz



Note! All units are in [mm] unless others are stated.
Disclaimer: This simplified dimensional drawing does not show all details.