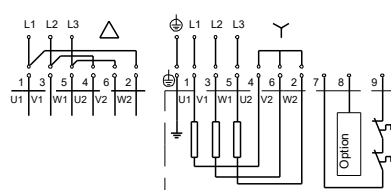
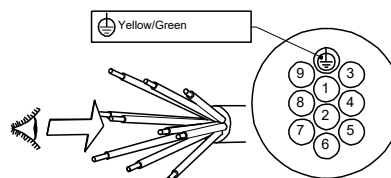
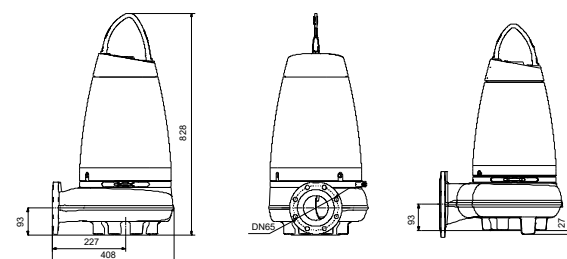
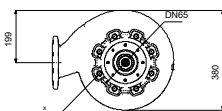
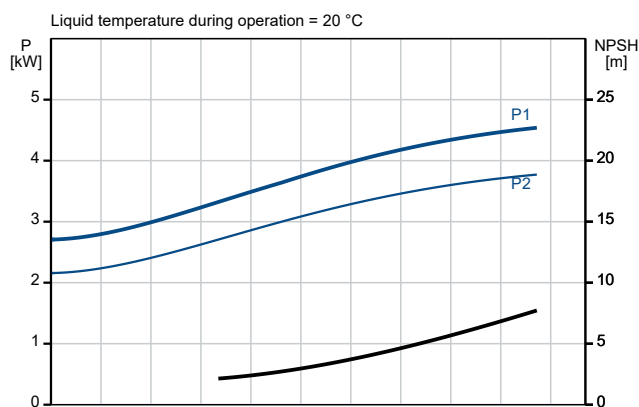
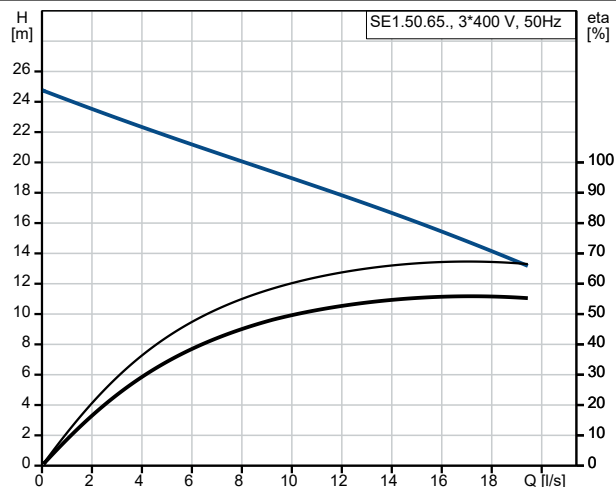


Description	Value
<b>General information:</b>	
Product name:	SE1.50.65.40.2.51D.B
Product No:	96047525
EAN number:	5700395045567
<b>Technical:</b>	
Rated flow:	19 l/s
Maximum flow:	24.4 l/s
Rated head:	14.4 m
Maximum head:	24.8 m
Type of impeller:	S-TUBE
Max. Particle:	50 mm
Max. hydraulic efficiency:	65 %
Approvals:	EN12050-2
Curve tolerance:	ISO9906:2012 3B2
Cooling jacket (Yes/No):	Y
<b>Materials:</b>	
Pump housing:	Cast iron
Pump housing:	EN 1561 EN-GJL-250
Impeller:	Cast iron
Impeller:	EN 1561 EN-GJL-250
Shaft seal:	SiC/SiC
Secondary shaft seal:	CER/CARNBR
<b>Installation:</b>	
Range of ambient temperature:	0 .. 40 °C
Maximum operating pressure:	6 bar
Type of inlet connection:	DIN
Type of outlet connection:	DIN
Size of inlet connection:	DN 65
Size of outlet connection:	DN 65
Pressure rating for outlet connection:	PN 10
Maximum installation depth:	7 m
Inst dry/wet:	DRY/SUBMERGED
Installation:	H/V
Auto coupling:	96090992
<b>Liquid:</b>	
Liquid temperature range:	0 .. 40 °C
Selected liquid temperature:	20 °C
Density:	998.2 kg/m³
<b>Electrical data:</b>	
Power input P1:	4.8 kW
Rated power - P2:	4 kW
Mains frequency:	50 Hz
Rated voltage:	3 x 380-415 V
Voltage tolerance:	+6/-10 %
Max starts per hour:	20
Rated current:	8.6 A
Rated current at 3/4 load:	6.7 A
Rated current at 1/2 load:	5.4 A
Starting current:	71 A
Rated current at no load:	3.9 A
Cos phi - power factor:	0.84
Cos phi - p.f. at no load:	0.15
Cos phi - p.f. at 3/4 load:	0.78
Cos phi - p.f. at 1/2 load:	0.68
Rated speed:	2925 rpm
Locked-rotor torque:	40 Nm
Breakdown torque:	54 Nm
Moment of Inertia:	0.019 kg m²





Company name:

Created by:

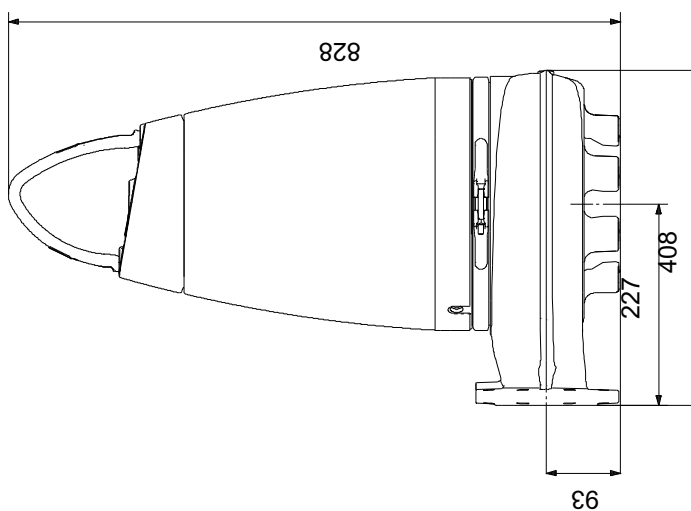
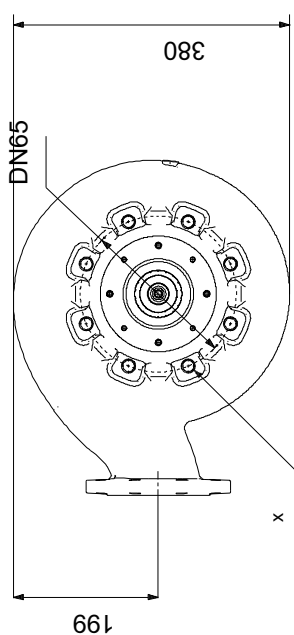
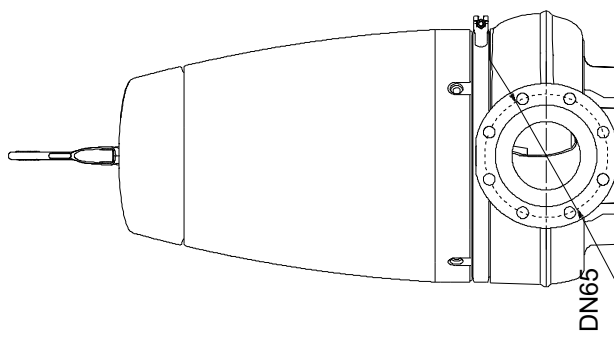
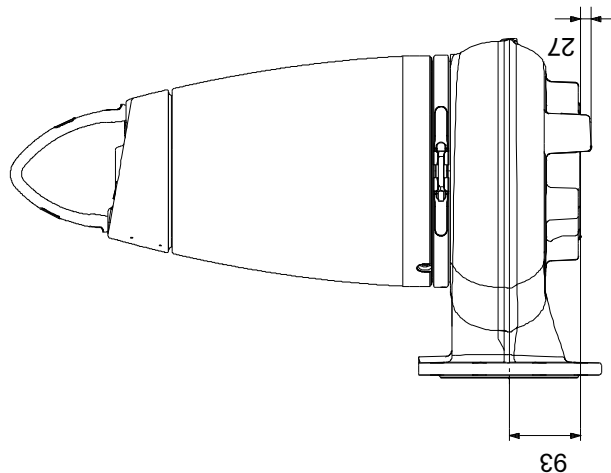
Phone:

Date:

18/07/2024

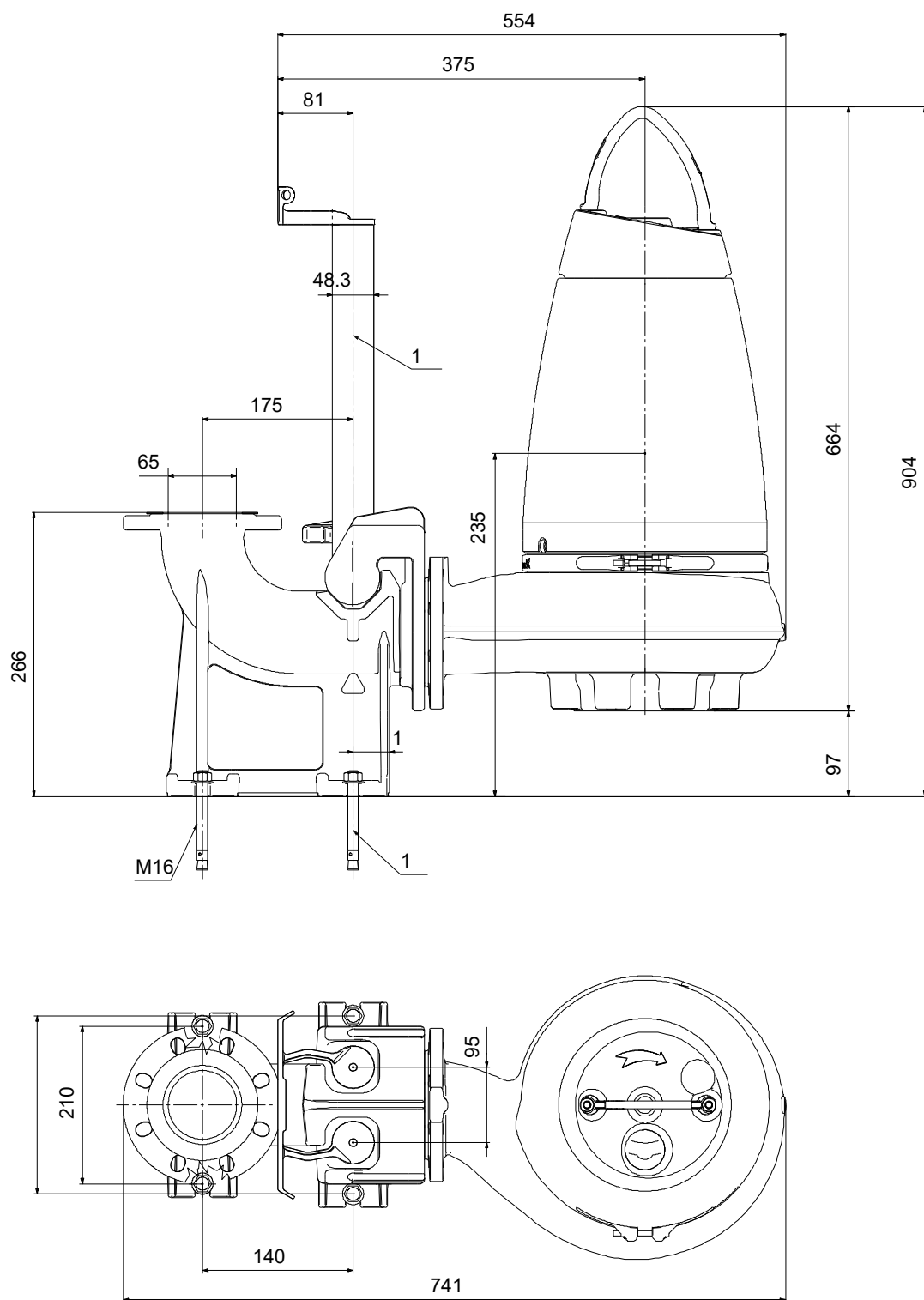
Description	Value
Motor efficiency at full load:	83.3 %
Motor efficiency at 3/4 load:	82.4 %
Motor efficiency at 1/2 load:	79.2 %
Number of poles:	2
Method of start:	Star-delta (YD)
Enclosure class (IEC 34-5):	IP68
Insulation class (IEC 85):	F
Explosion proof:	no
Built-in motor protection:	PTO
Thermal protection:	Internal
Power cable type:	Lyniflex
Length of power cable:	10 m
Power plug:	No plug
<b>Controls:</b>	
Control box:	N
Moisture sensor:	N
Water-in-oil sensor:	N
Temp. sensor:	N
<b>Others:</b>	
Net weight:	135 kg
Gross weight:	154 kg
Danish VVS No.:	391287133

**96047525 SE1.50.65.40.2.51D.B 50 Hz**



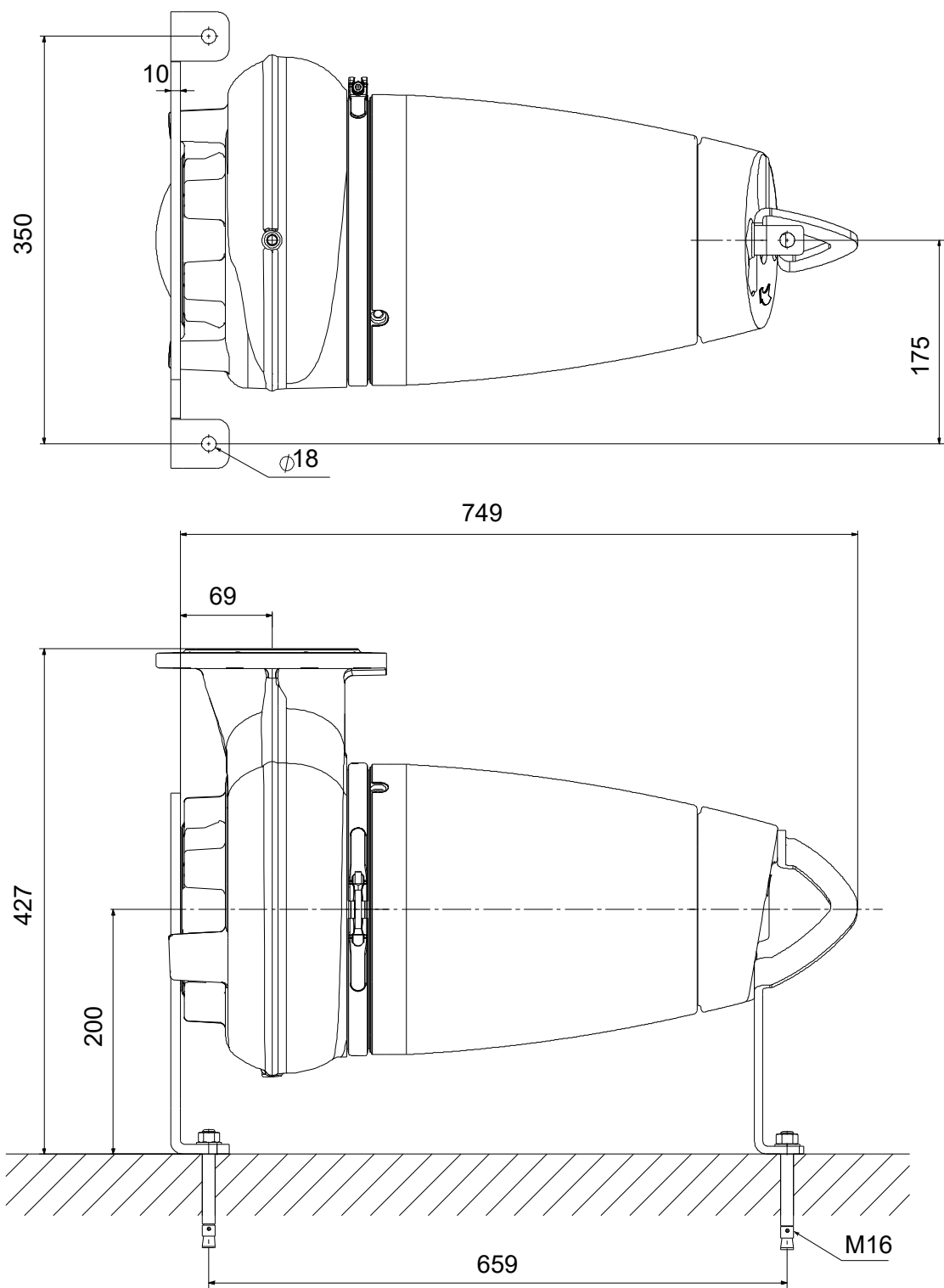
Note! All units are in [mm] unless others are stated.  
Disclaimer: This simplified dimensional drawing does not show all details.

## 96047525 SE1.50.65.40.2.51D.B 50 Hz



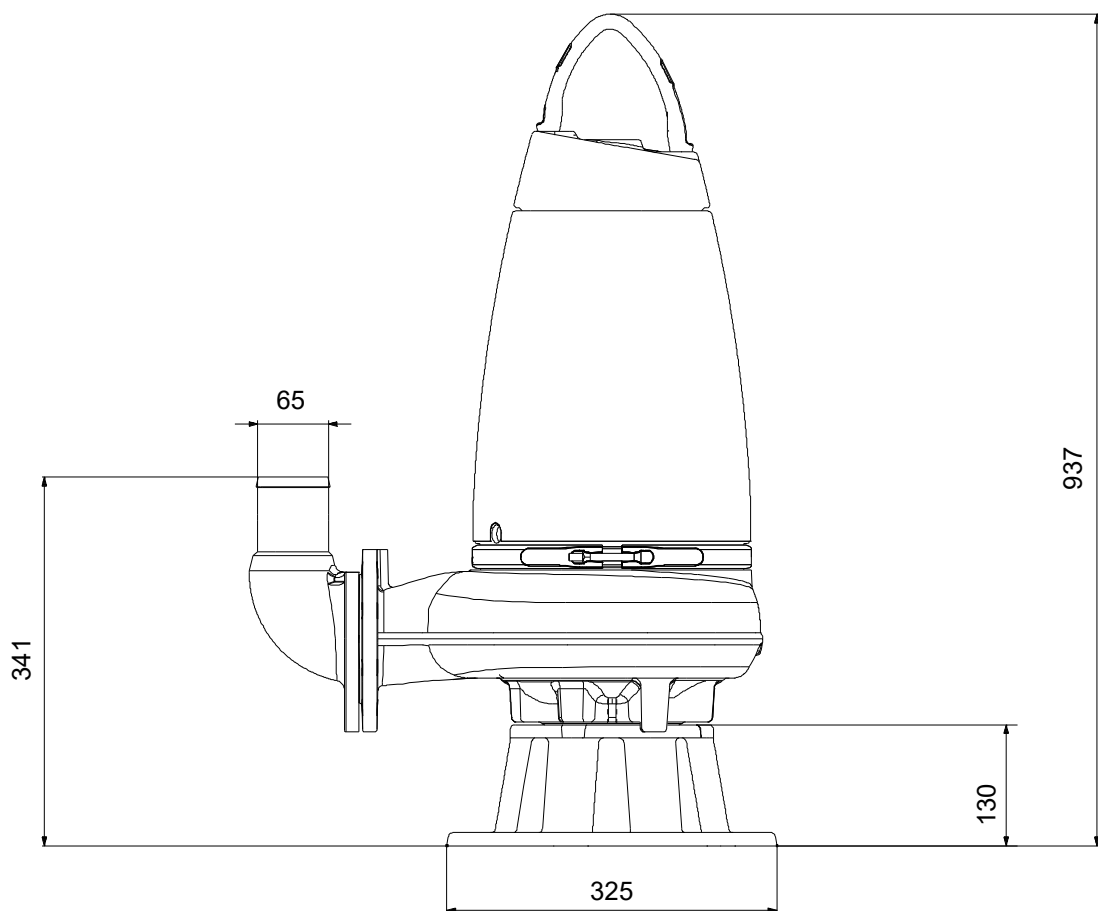
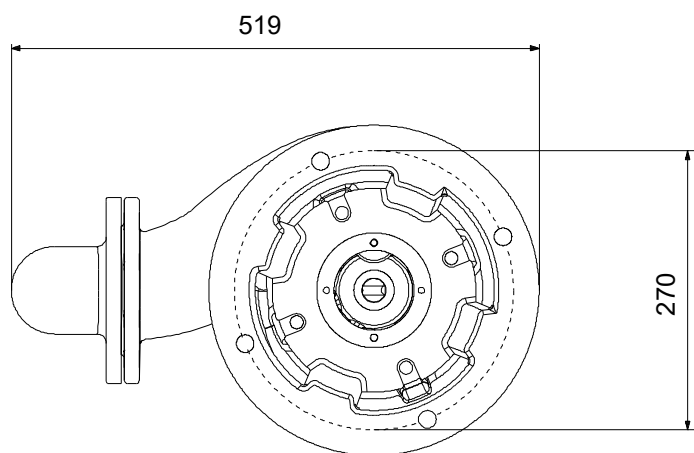
Note! All units are in [mm] unless others are stated.  
Disclaimer: This simplified dimensional drawing does not show all details.

**96047525 SE1.50.65.40.2.51D.B 50 Hz**



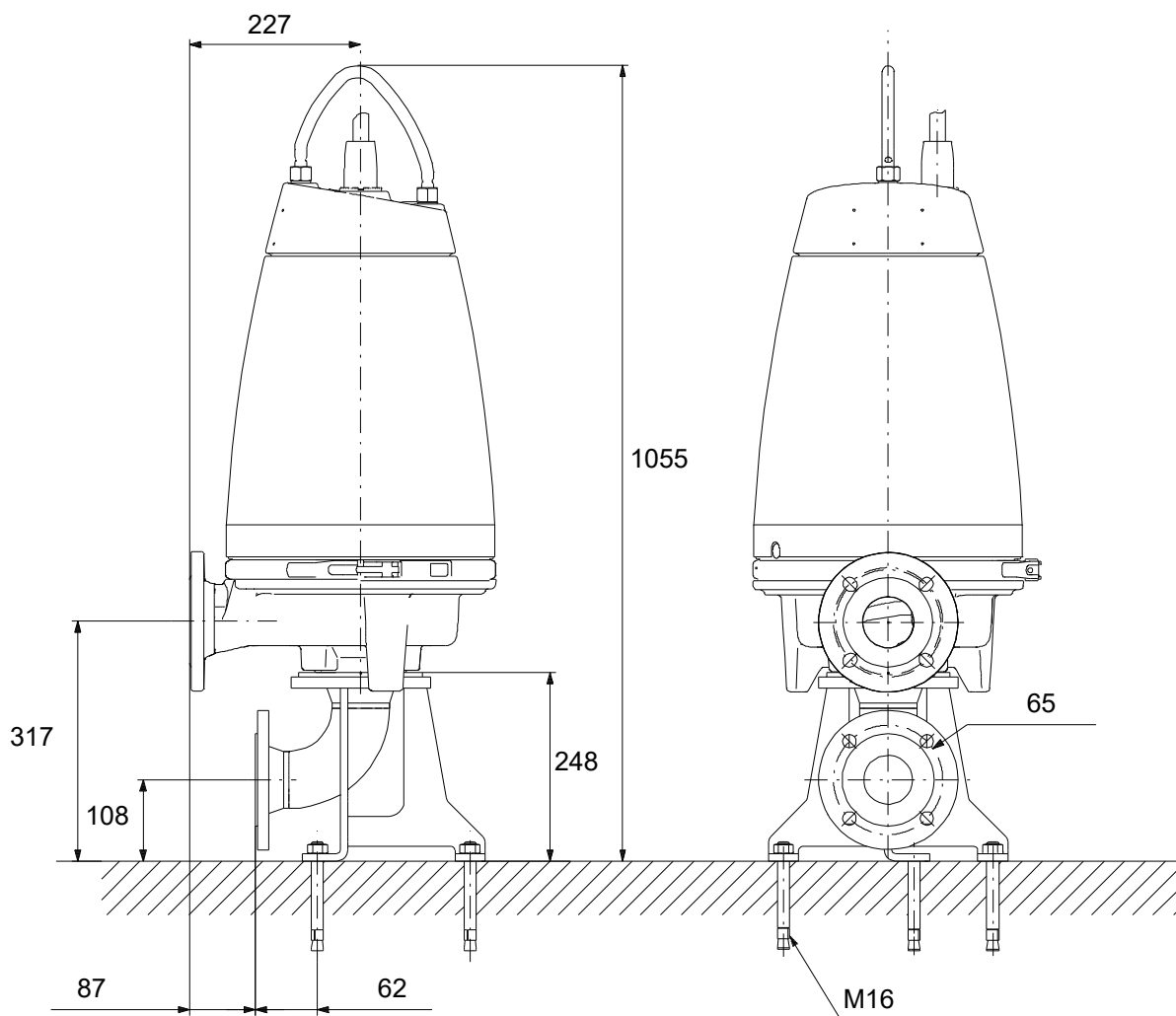
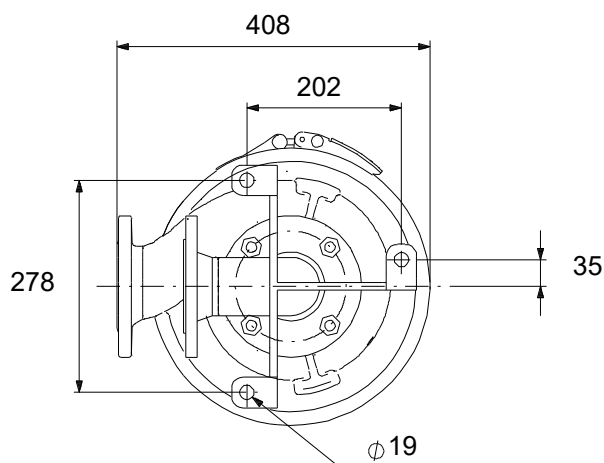
Note! All units are in [mm] unless others are stated.  
Disclaimer: This simplified dimensional drawing does not show all details.

**96047525 SE1.50.65.40.2.51D.B 50 Hz**



Note! All units are in [mm] unless others are stated.  
Disclaimer: This simplified dimensional drawing does not show all details.

## 96047525 SE1.50.65.40.2.51D.B 50 Hz



Note! All units are in [mm] unless others are stated.  
Disclaimer: This simplified dimensional drawing does not show all details.