

Qty.	Description
1	<p>CM 10-4 A-R-G-E-AVBE F-A-A-N ***ConfiguredProduct***</p> <p>Product No.: On request Pump without motor</p> <p>Compact, reliable, horizontal, multistage, end-suction centrifugal pump with axial suction port and radial discharge port. Pump materials in contact with the liquid are in high-grade stainless steel. The mechanical shaft seal is a special designed, unbalanced O-ring seal. Pipework connection is via internal Whitworth pipe threads, Rp (ISO 7/1).</p> <p>The pump is fitted with a 3-phase, foot-mounted, fan-cooled asynchronous motor.</p> <p>Controls:</p> <p>Frequency converter: None</p> <p>Liquid:</p> <p>Pumped liquid: Water</p> <p>Liquid temperature range: -20 .. 40 °C</p> <p>Selected liquid temperature: 20 °C</p> <p>Density: 998.2 kg/m³</p> <p>Technical:</p> <p>Pump low temp.: N</p> <p>Code for shaft seal: AVBE</p> <p>Rotating seal face material: V, Aluminium oxid >99%</p> <p>Stationary seal face material: B, Carbon Graph. Resin Imprg</p> <p>Elastomer in shaft seal: E, EPDM</p> <p>CE approved (Yes/No): Y</p> <p>cURus approved: N</p> <p>CCCs approved: No</p> <p>USA MEPS (CC marking): No</p> <p>China MEPS (CEL): No</p> <p>South Korea MEPS (Kemco): No</p> <p>Curve tolerance: ISO9906:2012 3B</p> <p>Pump cleaned and dried: N</p> <p>Colour of the pump: RAL 9004</p> <p>Report, duty point test: N</p> <p>UBA approval (Yes/No): Y</p> <p>Report, cleaned pump: No</p> <p>Report, material quality: N</p> <p>Materials:</p> <p>Pump housing: Stainless steel EN 1.4401 AISI 316</p> <p>Impeller: Stainless steel EN 1.4401 AISI 316</p> <p>Sleeve: Stainless steel AISI 316L EN 1.4401</p> <p>Shaft: Stainless steel EN 1.4401 AISI 316</p> <p>Installation:</p> <p>Range of ambient temperature: -20 .. 55 °C</p> <p>Max pressure at stated temp: 10 bar / 40 °C 10 bar / 40 °C</p> <p>Type of connection: Rp</p>



Company name:

Created by:

Phone:

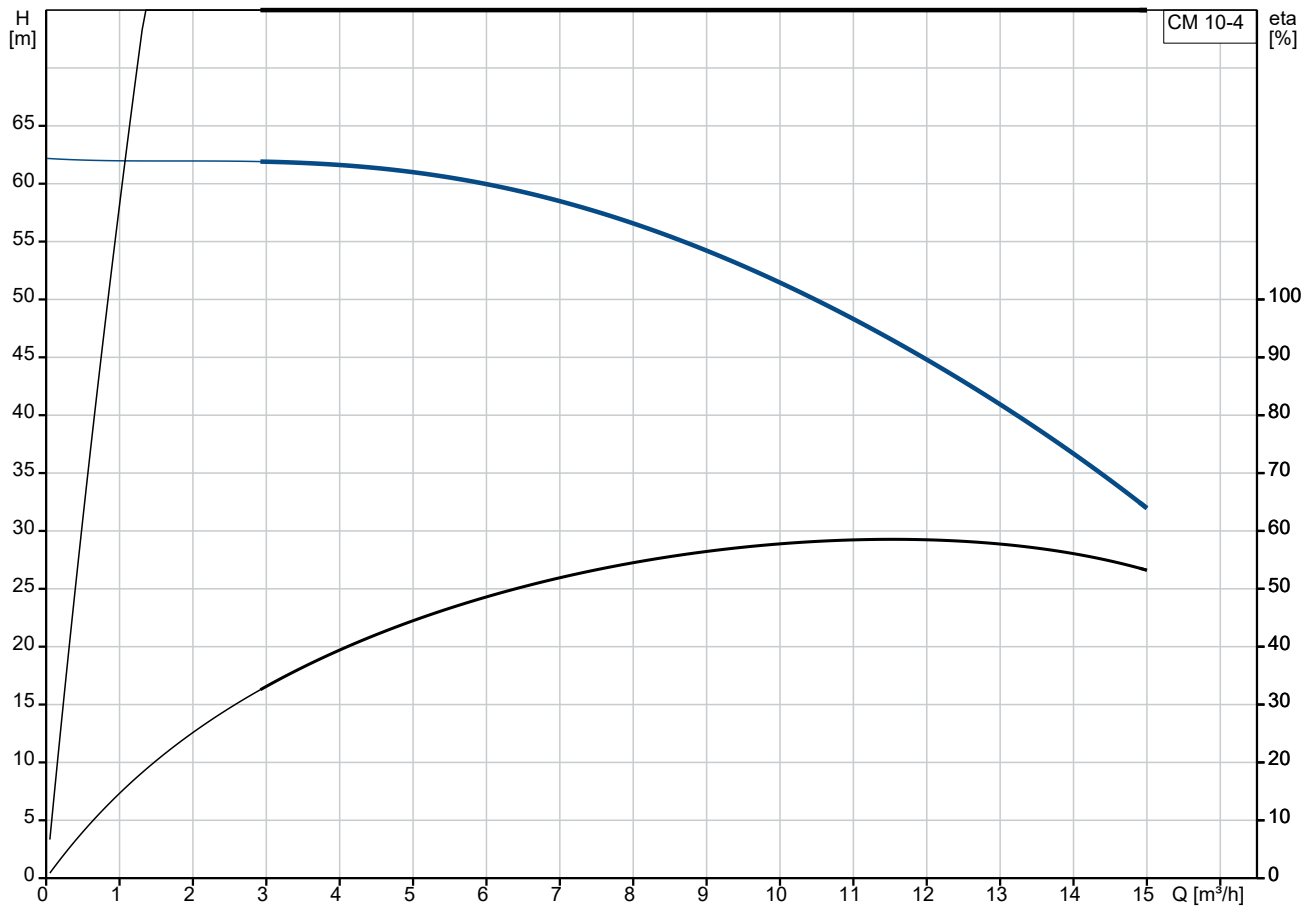
Date:

25/06/2024

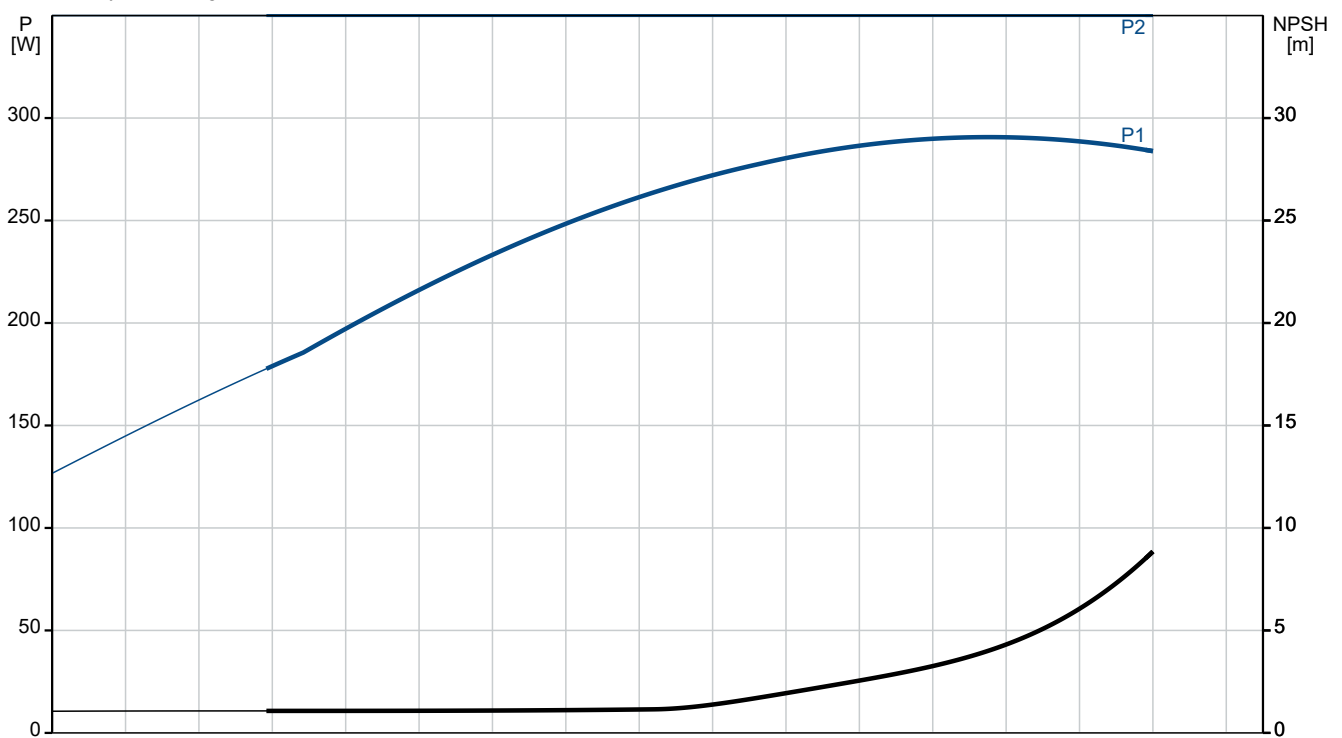
Qty.	Description
------	-------------

1	Pressure rating for connection: PN 16 Outlet position: 12 Electrical data: Motor standard: IEC Frame size: 100A Multi plug: N Over/undersize motor: Standard motor size Suitable for 50/60 Hz: N Service factor: 1 Number of poles: 2 Enclosure class (IEC 34-5): 55 Insulation class (IEC 85): F Built-in motor protection: PTC Motor No: 96898424 Others: Terminal box position: 12 Net weight: 33.4 kg Gross weight: 35.9 kg Alternative colouring: N
---	--

CM 10-4 A-R-G-E-AVBE F-A-A-N



Pumped liquid = Water
 Liquid temperature during operation = 20 °C
 Density = 998.2 kg/m³



Description	Value
-------------	-------

General information:

Product name:	CM 10-4 A-R-G-E-AVBE F-A-A-N
Product No:	On request
Based on:	96945967
EAN number:	On request

Technical:

Impellers:	4
Number of reduced-diameter impellers:	0
Pump low temp.:	N
Code for shaft seal:	AVBE
Shaft seal type:	A, Unbalanced o-ring seal
Rotating seal face material:	V, Aluminium oxid >99%
Stationary seal face material:	B, Carbon Graph. Resin Imprg

Elastomer in shaft seal:	E, EPDM
CE approved (Yes/No):	Y
cURus approved:	N
CCCs approved:	No
USA MEPS (CC marking):	No
China MEPS (CEL):	No
South Korea MEPS (Kemco):	No
Curve tolerance:	ISO9906:2012 3B
Pump version:	A
Pump cleaned and dried:	N
Colour of the pump:	RAL 9004
Report, duty point test:	N
UBA approval (Yes/No):	Y
Report, cleaned pump:	No
Report, material quality:	N

Materials:

Pump housing:	Stainless steel
Pump housing:	EN 1.4401
Pump housing:	AISI 316
Impeller:	Stainless steel
Impeller:	EN 1.4401
Impeller:	AISI 316
Sleeve:	Stainless steel
Sleeve:	AISI 316L
Sleeve:	EN 1.4401
Shaft:	Stainless steel
Shaft:	EN 1.4401
Shaft:	AISI 316

Installation:

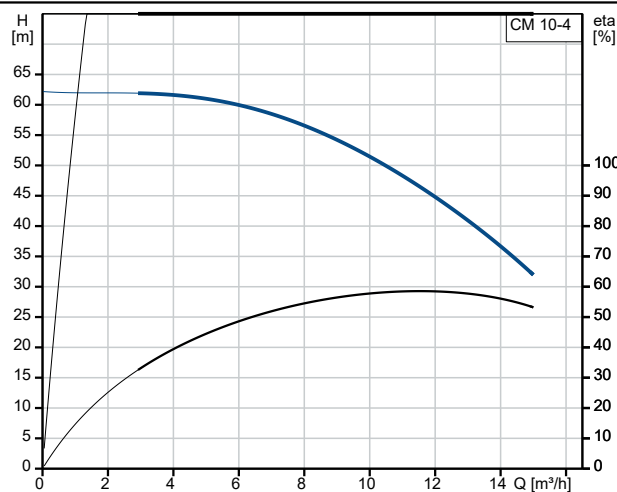
Range of ambient temperature:	-20 .. 55 °C
Max pressure at stated temp:	10 bar / 40 °C
Max pressure at stated temp:	10 bar / 40 °C
Type of connection:	Rp
Pressure rating for connection:	PN 16
Outlet position:	12

Liquid:

Pumped liquid:	Water
Liquid temperature range:	-20 .. 40 °C
Selected liquid temperature:	20 °C
Density:	998.2 kg/m³

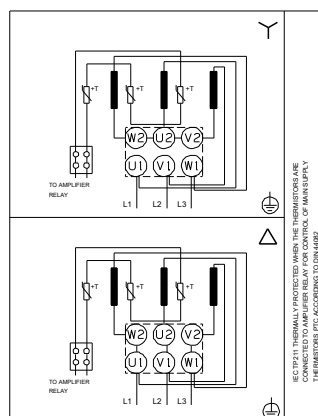
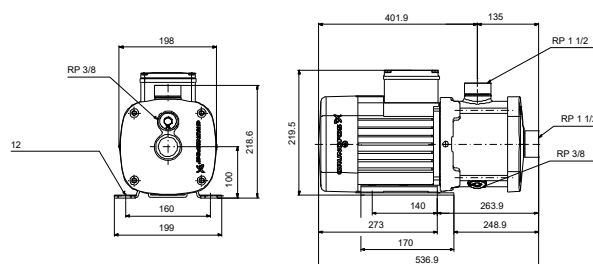
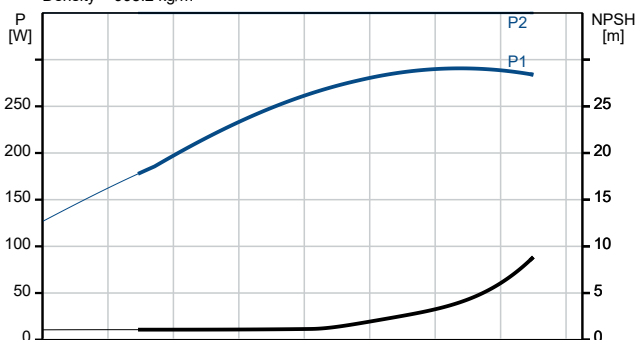
Electrical data:

Motor standard:	IEC
Frame size:	100A



Pumped liquid = Water

Liquid temperature during operation = 20 °C

Density = 998.2 kg/m³



Company name:

Created by:

Phone:

Date:

25/06/2024

Description	Value
Multi plug:	N
Over/undersize motor:	Standard motor size
Suitable for 50/60 Hz:	N
Service factor:	1
Number of poles:	2
Enclosure class (IEC 34-5):	55
Insulation class (IEC 85):	F
Built-in motor protection:	PTC
Motor No:	96898424
Controls:	
Frequency converter:	None
Others:	
Terminal box position:	12
Net weight:	33.4 kg
Gross weight:	35.9 kg
Alternative colouring:	N



Company name:

Created by:

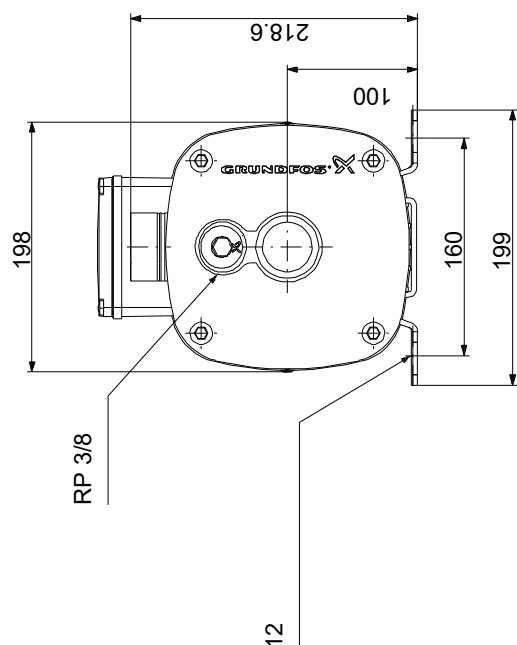
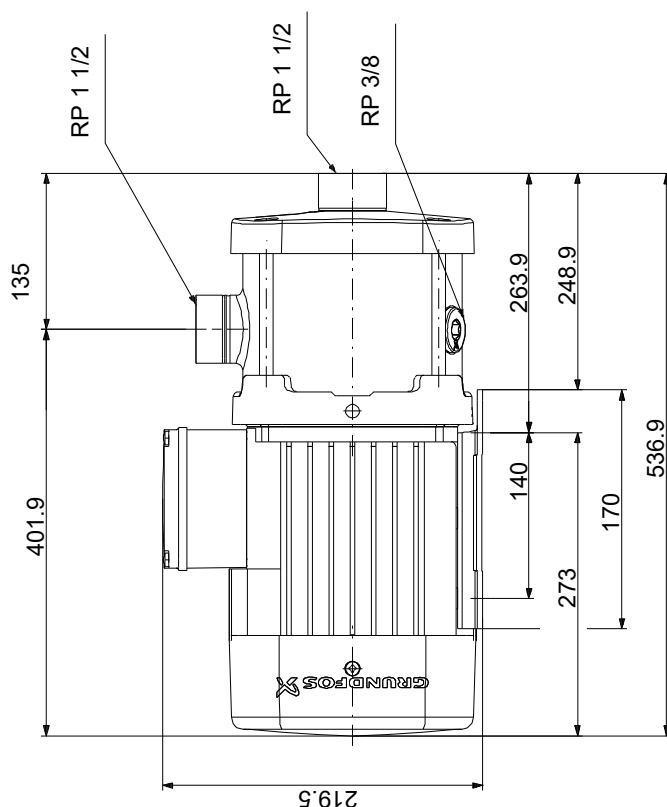
Phone:

Date:

25/06/2024

CM 10-4 A-R-G-E-AVBE F-A-A-N

CM 10-4 A-R-G-E-AVBE F-A-A-N



Note! All units are in [mm] unless others are stated.

Disclaimer: This simplified dimensional drawing does not show all details.